



ZERO
DISSOLVED SOLIDS

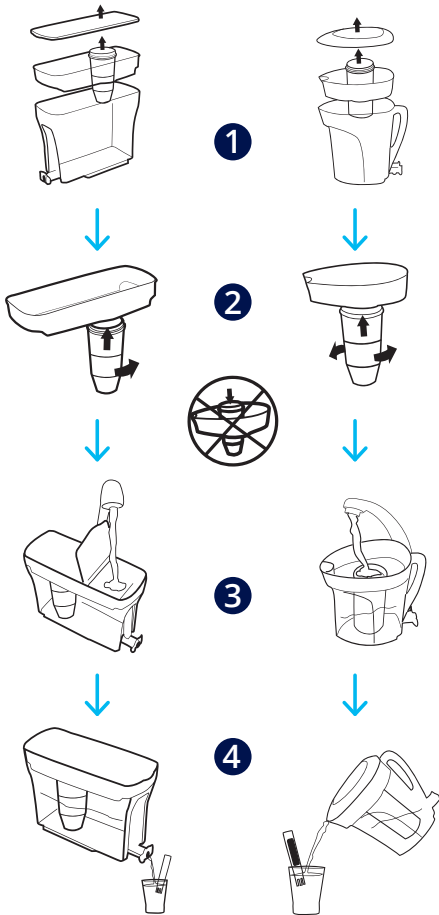
— FOR THE —
**PUREST TASTING
WATER**

ZEROWATER.EU

USER MANUAL

FOR ALL ZERO WATER SYSTEMS

Wash all parts except the filter with a soft sponge and some dishwashing soap. Then rinse with plenty of water and dry off thoroughly before using.



1 Remove the lid and the water reservoir. Discard the filter packaging and, if necessary, screw off the blue cap.

2 Make sure that the silicone ring is tight against the filter. Screw in the filter and tighten it firmly to ensure a complete seal.

Do not place the filter into the reservoir from above.

3 Put the reservoir into the pitcher. Fill up the top reservoir with cold tapwater. And place the lid back on.

4 Pour yourself a dry and clean glass with delicious filtered water from your ZeroWater pitcher.

Make sure that no water from the upper container drips into the glass during pouring.

TDS-METER

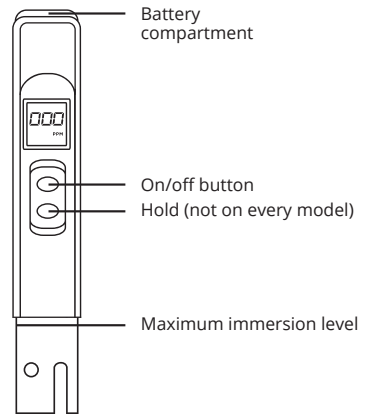
FOR REPLACING THE FILTER

TDS stands for Total Dissolved Solids, meaning the total amount of dissolved substances in drinking water. The substances in tapwater include but are not limited to minerals, metals, salts, pesticides or drug residue.

1. THE TDS-METER

Remove the cap and turn on the device. Immerse the meter in water to the maximum immersion level. The screen will show the TDS value of your water.

Make sure to change the filter when the meter shows a TDS score of 006 or higher.



2. MEASURING TDS

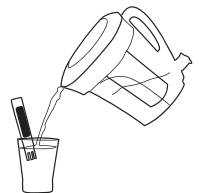


1

Fill a clean and dry glass with filtered water from the ZeroWater pitcher.

2

Immerse the TDS-meter in the water to the maximum immersion depth shown on the image.



1st measurement not 000?

Make sure that the filter is screwed in correctly and that there is no water between the silicone ring and the reservoir. To check this, fill the container with water and hold it over the sink. If drops form between the silicone ring and the reservoir the filter is not screwed in properly and the ring does not create a watertight seal.